



*... safely to the destination*

# CATA LOGUE 2011





# TABLE OF CONTENTS

propellers	03
propeller conuses	12
propeller control	14
nose wheels	16
main landing wheels	19
tyres, tubes	28
main braking cylinders	30
trottle control, fuel system	34
the stretchers	38
eyes with outer thread	40
rod ends	42
accessories	45
spare parts	48



# ABOUT US

The company  
Kašpar and sons s.r.o. was already  
established by Mr. M. Kašpar in 1989.

It was originally oriented to a machine  
production later particularly to an accurate  
machining of parts on CNC machines.

The single-part production of parts for UL  
aircrafts started in 1995. The small batch  
production followed in 1997. It has still run up to  
now. Nevertheless, it is only the batch production  
in these days. Nowadays twenty qualified  
workmen are employed by the company.



## ABOUT US

To ensure the standards of processes used  
throughout the production and supplies we  
introduced the system of the quality control in  
accordance with EN ISO 9001:2000 in 2001,  
in 2009 we certified the quality system to ISO  
9001:2008.

Our aim is to offer products of the best quality  
for reasonable prices along with a cooperation on  
concrete projects and sales promotions.

The sale and service are ensured by our company  
in the territory of the Czech Republic. Out of it, it is  
able to contact the nearest saler.

We will be pleased if you find any part of our  
offer interesting. Surely, we will be glad to give  
you further information.

Kašpar a synové  
– strojírna Kalmar s.r.o.  
Nádražní 39/76  
Praha 5–150 00  
Czech Republic

Telefon: +420 257 320 139  
+420 257 320 132

Telefax: +420 257 322 226

Web: [www.kasparaero.cz](http://www.kasparaero.cz)

e-mail: [info@kasparaero.cz](mailto:info@kasparaero.cz)  
[kalmar@kasparaero.cz](mailto:kalmar@kasparaero.cz)

Coordinate GPS:  
50°4'0.74"N / 14°24'26.98"E

Opening hours  
MO-FRI 7.00-15.30





# PROPELLERS

In-flight adjustable fullcomposite propellers, the range of KA, are distinguished by a very resistant construction, a wide scope of the utilization and a long life guarantee. The utilization is able for a private flying, schools and other commercial using as well. Fixing sizes of the propeller hub respond to the engines Rotax, for a safe and trouble-free mounting of the propeller to the engine the necessary connection accessories are a part of the delivery. It is possible to choose from two sizes of propeller cylinders for the type KA of propellers, they are not fixed under the propeller hub by reason of possible vibrations, so they are fixed to the special fixture on the propeller hub.

## PROPELLERS TYPE KA

One of the security component is the backstop formation of blades on the minimal striking angle that is made by touch down coulisse on the propeller hub. By this the safe flying range and touch-down is ensured even if there is a failure of the adjusting system.

Blades of propellers are normally in white-red colours with the dull grey back side, the colour is resistant of UV radiation. The entering edge of the blade is safed by the polyurethan part. Because of used materials and heat adjustment of blades the propeller is suitable for all climatic conditions.

Propellers are delivered only completed and they are supplied by needed grease, safed from unblocking, the striking angle is set according the engine and they are prepared directly to instal on the aircrafts.

The mounting is quick and easy together with the adjusting components of Kašpar propellers.







## The fullcomposited in-flight adjustable propeller KA-1 3blade

The best selling type of the range KA, Ø1620mm. A two blade propeller is determined for engines R 912 UL and a three blade propeller for engines R 912 ULS. It is used mainly on the aircrafts Eurostar, CT2, Skylark and good performances are known from P-96 Golf and Dynamic as well...

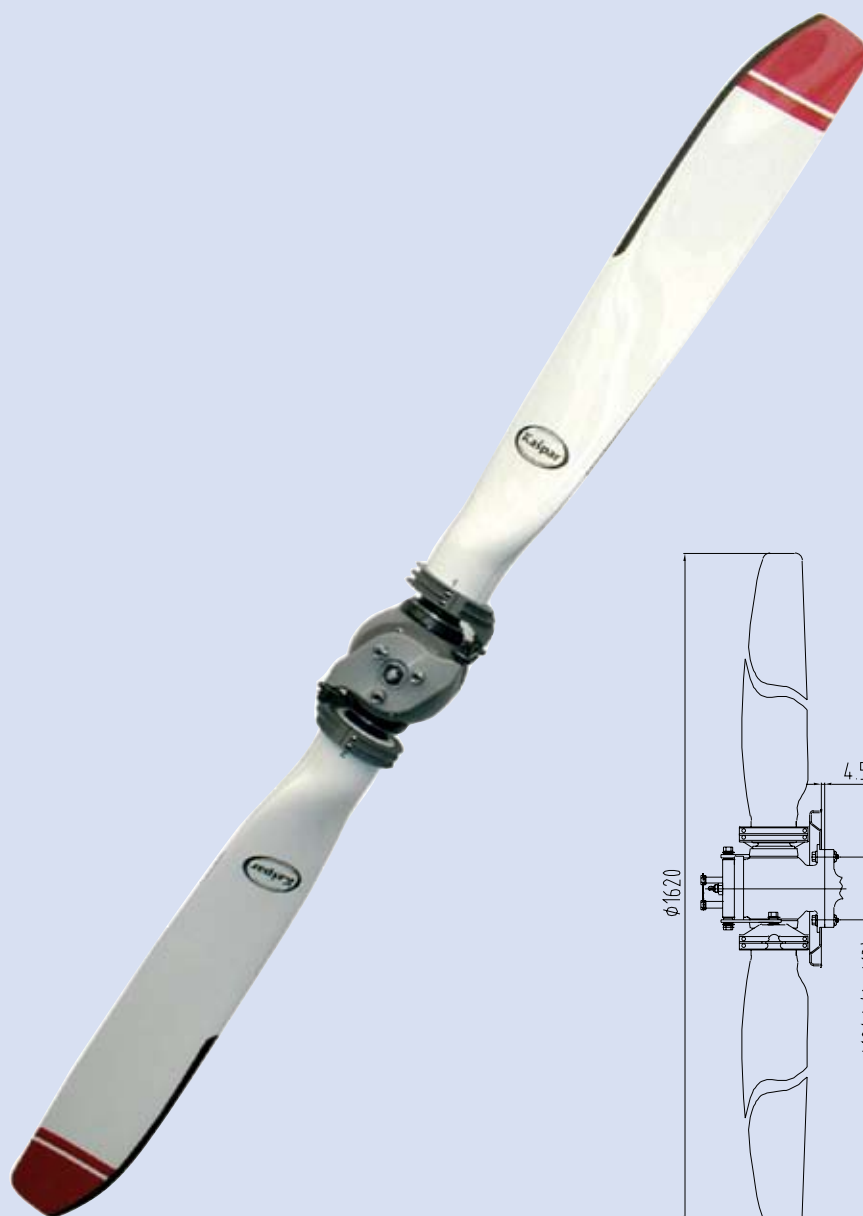


PRO  
PEL  
LERS  
TYPE  
KA

Order No.	Product name	Weight	Price/pcs
KA - 1/3 - PA	3 – blade propeller, right-hand, tractor	8 830 g	2.930 EUR
KA - 1/3 - PT	3 – blade propeller, right-hand, pusher	8 830 g	2.960 EUR
KA - 1/3 - LA	3 – blade propeller, left-hand, tractor	8 830 g	2.960 EUR
KA - 1/3 - LT	3 – blade propeller, left-hand, pusher	8 830 g	2.930 EUR



## The fullcomposited in-flight adjustable propeller KA-1 2blade



PRO  
PEL  
LERS  
TYPE  
KA

Order No.	Product name	Weight	Price/pcs
KA - 1/2 - PA	2 – blade propeller, right-hand, tractor	6 700 g	2.140 EUR
KA - 1/2 - PT	2 – blade propeller, right-hand, pusher	6 700 g	2.190 EUR
KA - 1/2 - LA	2 – blade propeller, left-hand, tractor	6 700 g	2.190 EUR
KA - 1/2 - LT	2 – blade propeller, left-hand, pusher	6 700 g	2.140 EUR



## The fullcomposited in-flight adjustable propeller KA-2 3blade

The biggest type of KA, Ø1720mm. A two and three blade propeller are mainly determined for engines R 912 ULS. It is used on the aircrafts for the UL aero-tow. Instalations are made mainly on the aircrafts Eurofox and Smaragd...



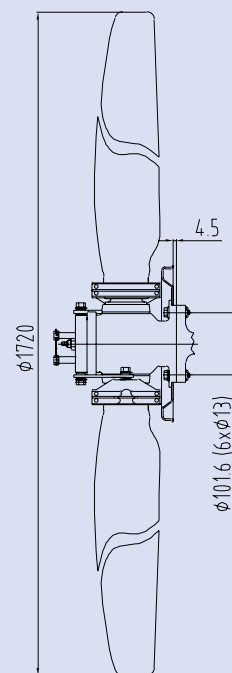
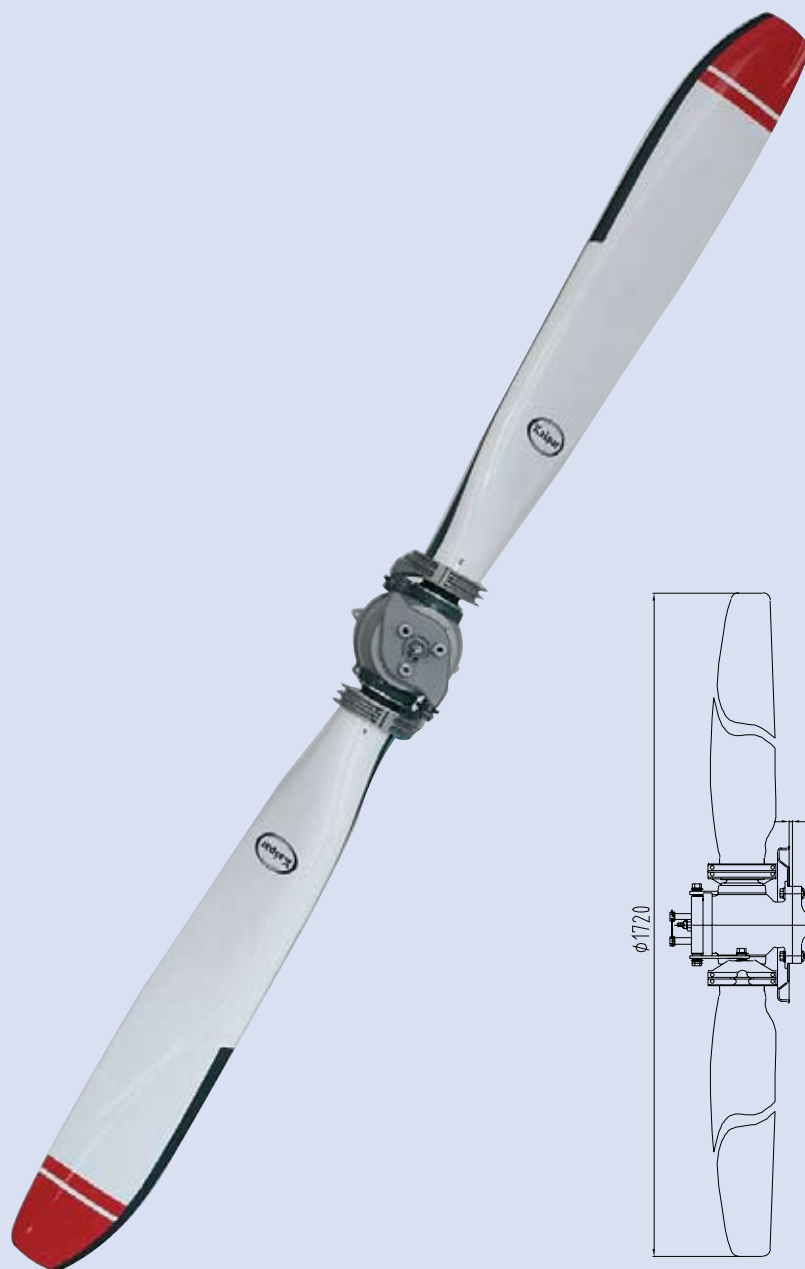
PRO  
PEL  
LERS  
TYPE  
KA

Order No.	Product name	Weight	Price/pcs
KA - 2/3 - PA	3 – blade propeller, right-hand, tractor	9 400 g	2.980 EUR
KA - 2/3 - PT	3 – blade propeller, right-hand, pusher	9 400 g	2.980 EUR
KA - 2/3 - LA	3 – blade propeller, left-hand, tractor	9 400 g	2.980 EUR
KA - 2/3 - LT	3 – blade propeller, left-hand, pusher	9 400 g	2.980 EUR





## The fullcomposited in-flight adjustable propeller KA-2 2blade



PRO  
PEL  
LERS  
TYPE  
KA

Order No.	Product name	Weight	Price/pcs
KA - 2/2 - PA	2 - blade propeller, right-hand, tractor	7 200 g	2.230 EUR
KA - 2/2 - PT	2 - blade propeller, right-hand, pusher	7 200 g	2.230 EUR
KA - 2/2 - LA	2 - blade propeller, left-hand, tractor	7 200 g	2.230 EUR
KA - 2/2 - LT	2 - blade propeller, left-hand, pusher	7 200 g	2.230 EUR



### The fullcomposited in-flight adjustable propeller KA-3 3blade

The fastest type of KA, Ø1680mm. A two blade propeller is determined for the engines R 912 ULS and a three blade propeller for the engines R 914, but mainly for aircrafts with a higher maximal speed, engines R912ULS and with a requirement for a two blade adjustable propeller. It is used on the aircrafts Dynamic, Skylark and Smaragd...

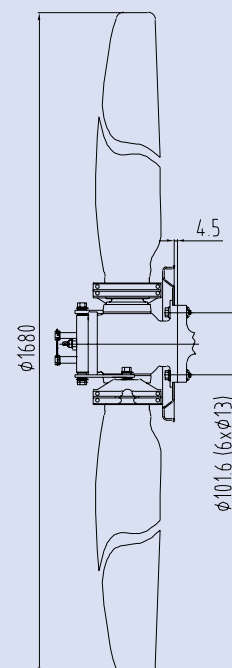
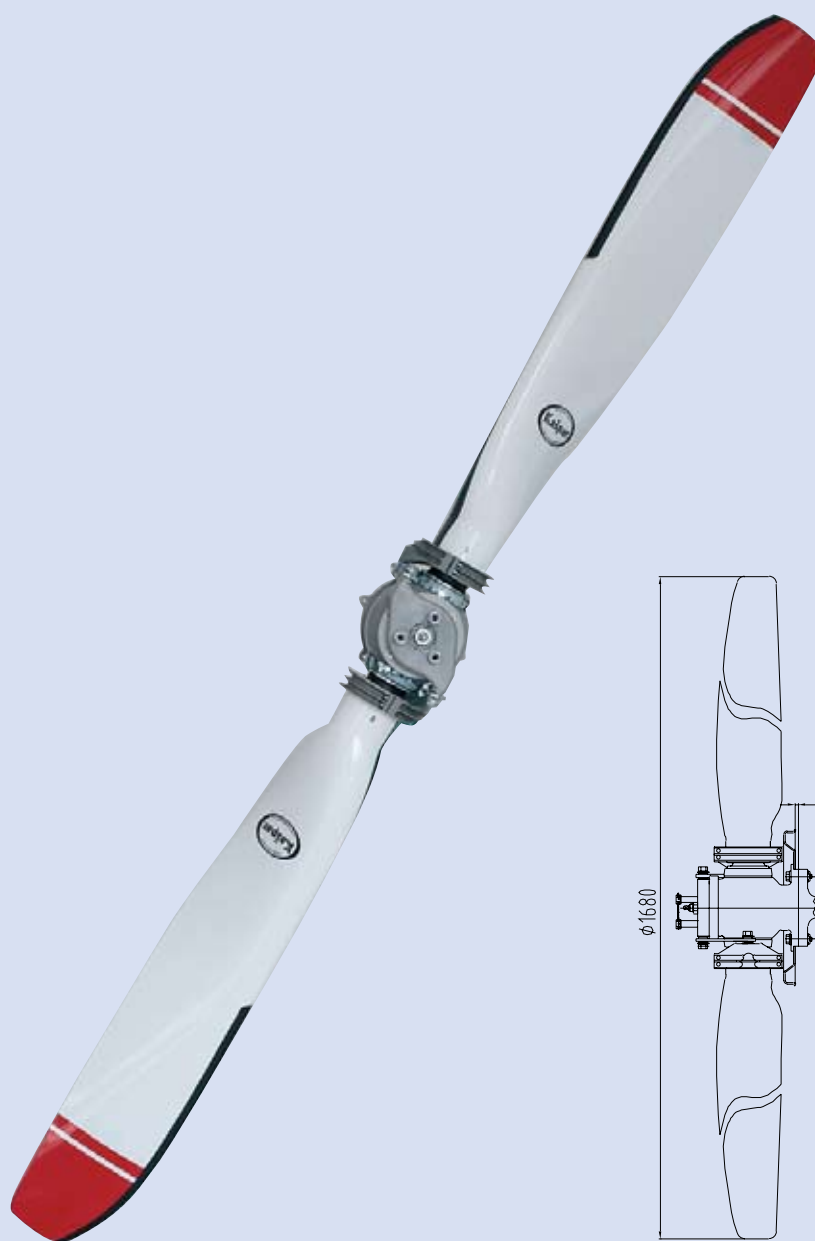


PRO  
PEL  
LERS  
TYPE  
KA

Order No.	Product name	Weight	Price/pcs
KA - 3/3 - PA	3 – blade propeller, right-hand, tractor	9 730 g	2.980 EUR
KA - 3/3 - LT	3 – blade propeller, left-hand, pusher	9 730 g	2.980 EUR



The fullcomposited in-flight adjustable propeller KA-3 2 blade



PRO  
PEL  
LERS  
TYPE  
KA

Order No.	Product name	Weight	Price/pcs
KA - 3/2 - PA	2 - blade propeller, right-hand, tractor	7 300 g	2.230 EUR
KA - 3/2 - LT	2 - blade propeller, left-hand, pusher	7 300 g	2.230 EUR



## The fullcomposited in-flight adjustable propeller KA4 – 2 and 3 blade

A new type of propeller, developed on the basis of the successful KA-1 blade pro×le. Its optimization was achieved by slimming the pro×le and increasing the propeller diameter to 1700mm. The lighter blade leads to reducing the size of the remaining mechanical components. The result is a propeller with comparable light parameters as the KA-1, but with a lighter weight and even operation.



PRO  
PEL  
LERS  
TYPE  
KA

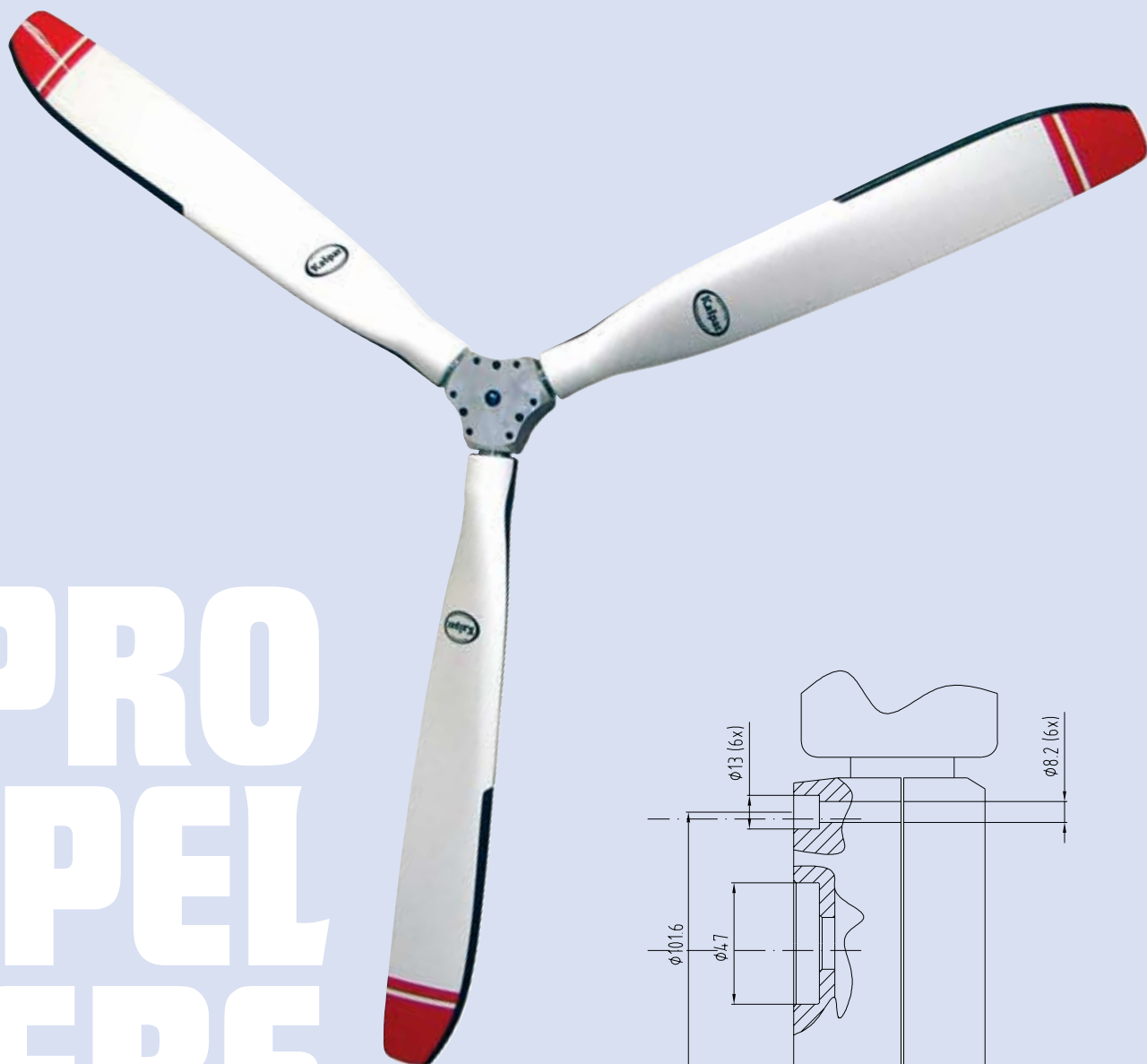
Order No.	Product name	Weight	Price/pcs
KA - 4/3 - PA	3 – blade propeller, right-hand, tractor	7.350 g	2.780 EUR
KA - 4/2 - PA	2 – blade propeller, right-hand, tractor	5.700 g	1.980 EUR

The three-blade solution can be used with Rotax 912UL and 912ULS motors, the two-blade solution can only be used with Rotax 912UL!



## The fullcomposited on the ground adjustable propeller KP4

This type of propeller was developed from the type KA1, mainly by the base of the blade and a reduction of profile with the contribution for a diameter of the propeller, which is at the moment 1700mm. It is used for engines R 912 UL, R 912 ULS.



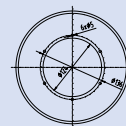
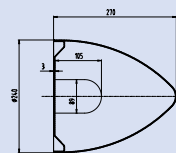
PRO  
PEL  
LERS  
TYPE  
KP

Order No.	Product name	Weight	Price/pcs
KP - 4/3 - PA	3 - blade propeller, right-hand, tractor	4200 g	951 EUR
KP - 4/3 - LT	3 - blade propeller, left-hand, pusher	4200 g	951 EUR
KP - 4/2 - PA	2 - blade propeller, right-hand, tractor	3 040 g	712 EUR
KP - 4/2 - LT	2 - blade propeller, left-hand, pusher	3 040 g	712 EUR



## Propeller conuses

They are delivered standardly in white colour, on the agreement in another shade according the RAL color table. The colours are resistant to UV radiation. Binder screws and attaching screws of plate are the part of the delivery of propeller conus for KA. By order please remark central hole of plate: for KA propeller Ø 124mm, for all other Ø 47mm.



### K-KU1-3L

Ø 240mm

Conus for prop. KA1,KA2,KA3

Weight: 385 g

Price: 76 EUR

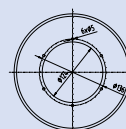
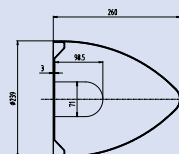
### K-KU1-2L

Ø 240mm

Conus for prop. KA1,KA2,KA3

Weight: 385 g

Price: 76 EUR



### K-KU2-3L

Ø 230mm

Conus for prop. KA-4

Weight: 440 g

Price: 76 EUR

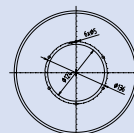
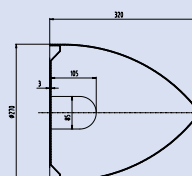
### K-KU2-2L

Ø 230mm

Conus for prop. KA-4

Weight: 450 g

Price: 76 EUR



### K-KU3-3L

Ø 270mm

Conus for prop. KA1,KA2,KA3

Weight: 520 g

Price: 80 EUR

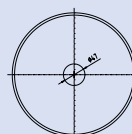
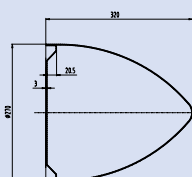
### K-KU3-2L

Ø 270mm

Conus for prop. KA1,KA2,KA3

Weight: 520 g

Price: 80 EUR



### K-KU3-UN-47

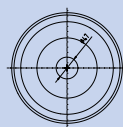
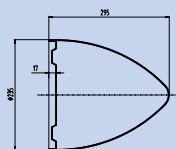
Ø 230mm

Conus for fix props without opening for blades, central hole Ø47

Weight: 580 g

Price: 76 EUR





### K-KU4-UN

Ø235mm

Conus without opening for blades,  
central hole Ø47

Weight: 420 g, Price: 76 EUR



### K-KU5-3L

Ø240mm

Conus for prop. KP-4

Weight: 480 g

Price: 76 EUR



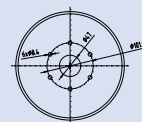
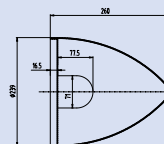
### K-KU5-2L

Ø240mm

Conus for prop. KP-4

Weight: 490 g

Price: 76 EUR



### K-KU6-3L

Ø235mm

Weight: 420 g

Price: 76 EUR

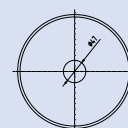
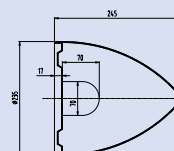


### K-KU6-2L

Ø235mm

Weight: 430 g

Price: 76 EUR

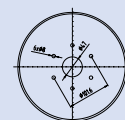
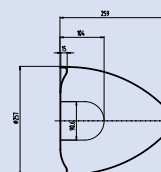


### K-KU7-3L

Ø258mm

Weight: 480 g

Price: 76 EUR



### K-KU1-3L-47

Ø240mm

Weight: 380 g

Price: 76 EUR

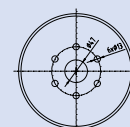
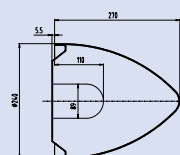


### K-KU1-2L-47

Ø240mm

Weight: 390 g

Price: 76 EUR







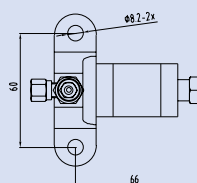
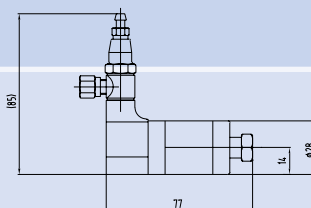
The reliability of hydraulic operating systems has reached the high standards. Their advantage leans on an unlimited installation seizing or the necessity of using a higher adjusting power. This feature is reduced by hydraulic systems and the installation can be done according aircrafts and producer's demands. Though it is possible to please a market of the mechanical adjusting.

#### K-809C-000

Horizontal cylinder – for engine

Weight: 245 g

Price: 99.30 EUR

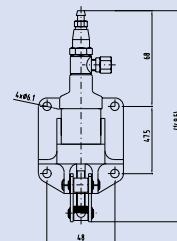
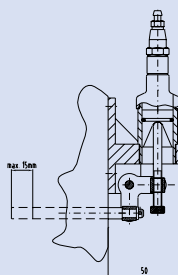


#### K-809K-000

Vertical cylinder – for gear-box

Weight: 270 g

Price: 139.60 EUR

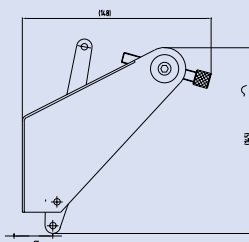
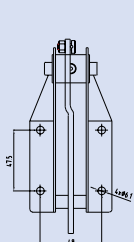


#### K-809M-000

Lever with holder – mechanical control

Weight: 180 g

Price: 176.30 EUR



PRO  
PEL  
LER  
CON  
TROL

# NOSE WHEELS



All nose wheels are determined for using on UL or VLA aircrafts, they are made by high quality aluminium alloy and polished. Bearings and connecting accessories of rim are the part of the delivery.

## NOSE WHEELS

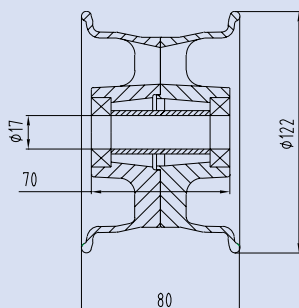
On the agreement it is possible to deliver the shaft, otherwise the wheels are without the shaft. It is possible to choose tyres for all sizes of nose wheels.

**K-104A-000**

Nose wheel 4" - standard

Weight: 690 g

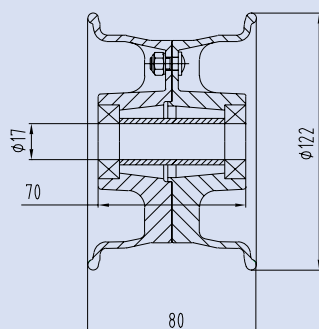
Price: 134 EUR

**K-114A-000**

Nose wheel 4" - eco

Weight: 630 g

Price: 73 EUR

**K-105A-000**

Nose wheel 5" Mg

Weight: 855 g

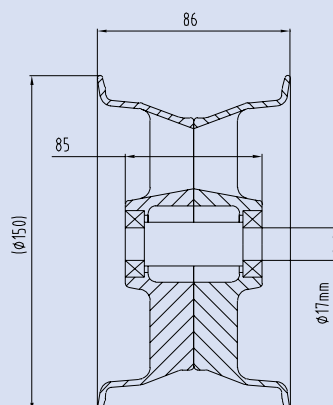
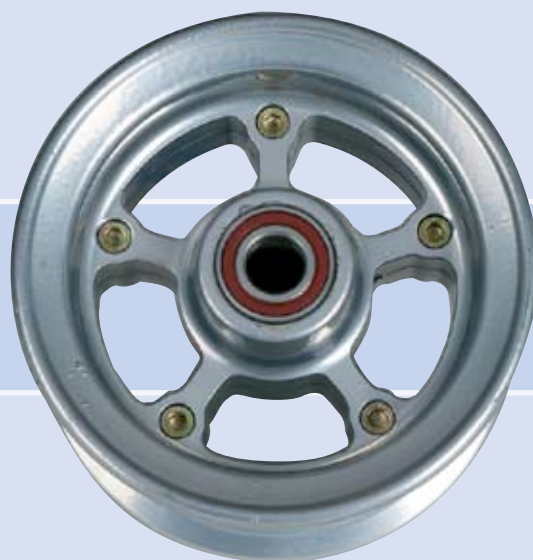
Price: 173.50 EUR

**K-115A-000**

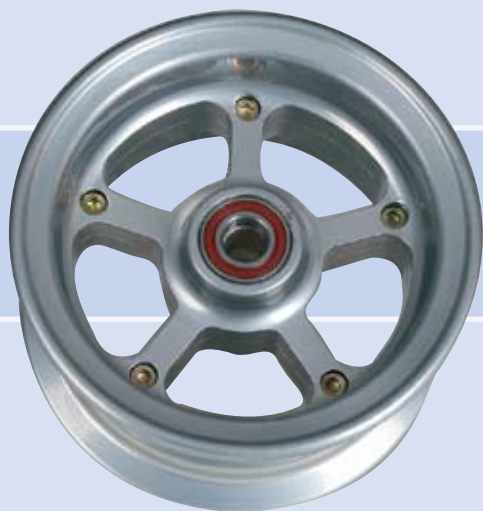
Nose wheel 5" Al

Weight: 1.120 g

Price: 149 EUR



no  
SL  
WHEELS

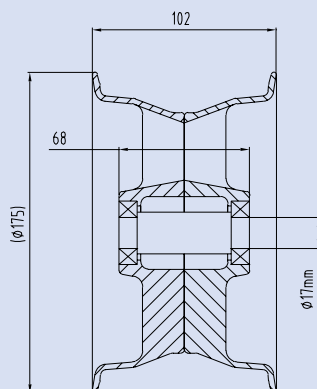


### K-106A-000

Nose wheel 6" standard

Weight: 1010 g

Price: 189.80 EUR

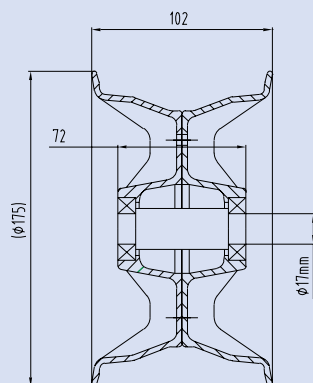


### K-116A-000

Nose wheel 6" - eco

Weight: 1100 g

Price: 91.50 EUR

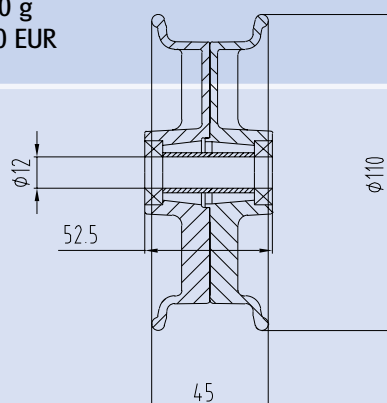
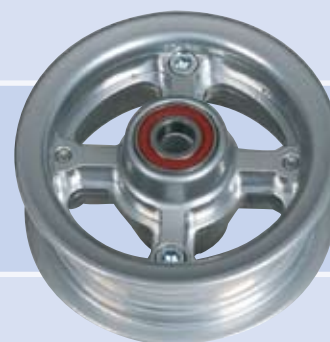


### K-252A-000

Tail wheel

Weight: 680 g

Price: 84.90 EUR



no  
sc

WHEELS



# MAIN LANDING WHEELS



The main landing wheels – wheels with disc brakes are of two types.

The first group are brakes with the closed braking system, the second group than with the open braking system.

The main difference is in the type of used main braking cylinder and the type of brakes. The closed system is greatly easy to instalate and fulfill. The advantage is the possibility of the easy connection in the case of the mounting of the double control. The disadvantage is the necessary maintenance and differences in the pressure during high temperature changes. The advantage of the open system is maintenance-free operating and the stability of system during high temperature changes.

## MAIN LANDING WHEELS

The disdvantage is the complicated mounting of the double control and the complicated construction of the main braking cylinder.

Both systems used disc brakes. The brake disc is fitted inside the rim of the wheel. The offer consists of basic single-piston brakes from double-piston to four-piston brakes with two braking discs. Braking pads used for the brakes are non-asbestos or sintr. The wheel shafts are constructed and controlled for the weights of categories UL and VLA aircrafts (maximal take-off weight 650 kg).

## Disk 4"

**K-204A-000** L=50

**K-204A-000-shaft C** L=39

4" wheel with brake and shaft

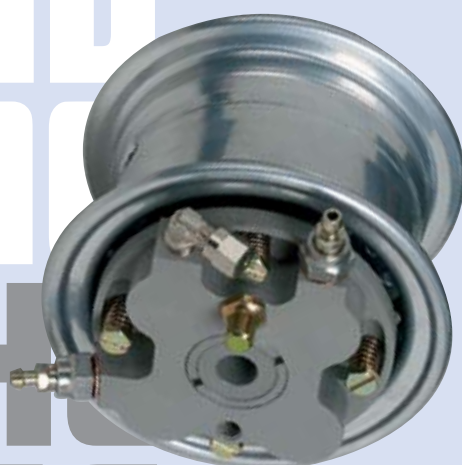
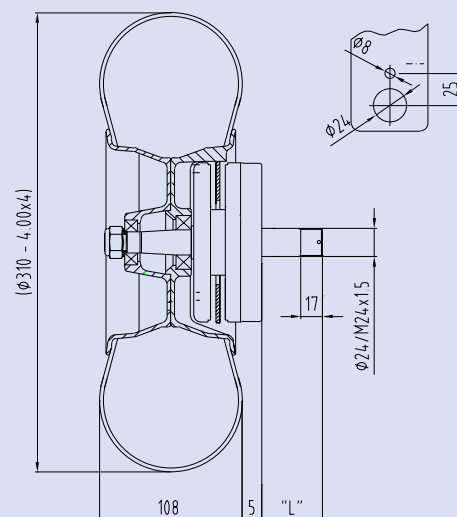
Weight: 1.710 g

Price: 489 EUR

Brake: double-disc, 4-piston

System: closed

Orientation: L - left, R - right



## Disk 4"

**K-204V-000**

4" wheel with brake, without shaft, hole Ø 12mm

Weight: 1.490 g

Price: 459.60 EUR

Brake: double-disc, 4-piston

System: closed

Orientation: L - left, R - right

Dimensions according to drawing,  
trough-hole Ø 12mm or 17mm

## Disk 5"

### K-205A-000

5" wheel with brake and shaft

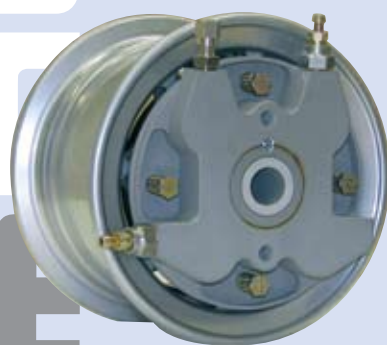
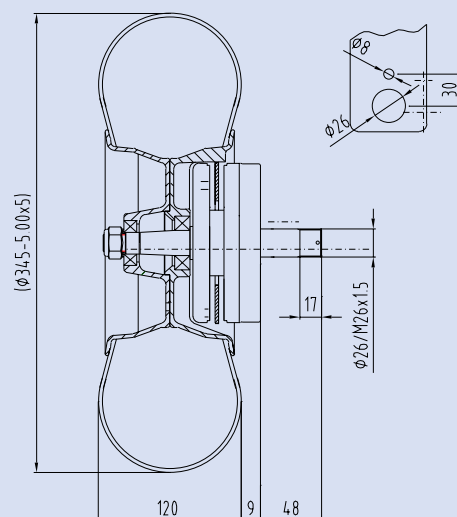
Weight: 2.400 g

Price: 499.20 EUR

Brake: single discs, 4-piston

System: closed

Orientation: L - left, R - right



## Disk 5"

### K-205V-000

5" wheel with brake, without shaft, hole Ø 17mm

Weight: 2.050 g

Price: 468.70 EUR

Brake: single disc, 4-piston

System: closed

Orientation: L - left, R - right

Dimensions according to drawing,  
trough-hole Ø 17mm

main  
LAND  
INC  
WHEELS



## Disk 6"

**K-206A-000** **L=48**

**K-206A-000-shaft F** **L=64**

6" wheel with brake and shaft

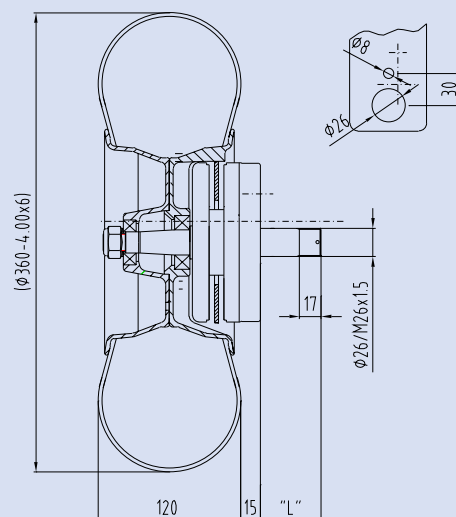
Weight: 2.755 g

Price: 543.80 EUR

Brake: single disc, 4-piston

System: closed

Orientation: L - left, R - right



## Disk 6"

**K-206V-000**

6" wheel with brake, without shaft, hole  $\phi 17$ mm

Weight: 2.400 g

Price: 497.60 EUR

Brake: single piston, 4-piston

System: closed

Orientation: L - left, R - right

Dimensions according to drawing,  
trough-hole  $\phi 17$ mm

## Disk 6"

**K-216A-000** **L=48**

**K-216A-000-shaft D** **L=40**

6" eco wheel with brake and shaft

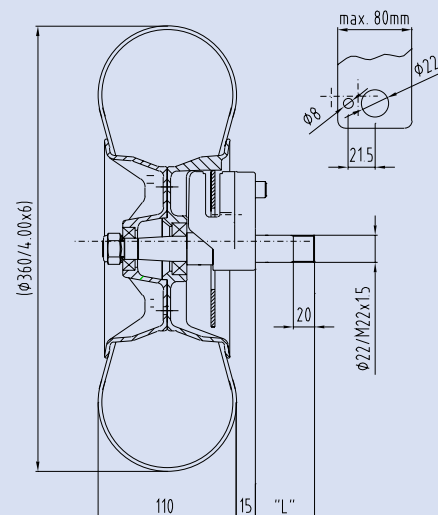
Weight: 1.975 g

Price: 244.10 EUR

Brake: single disc, 1-piston

System: opened

Orientation: L - left, R - right



## Disk 6"

**K-216V-000**

6" eco wheel with brake, without shaft, hole Ø 17mm

Weight: 1.645 g

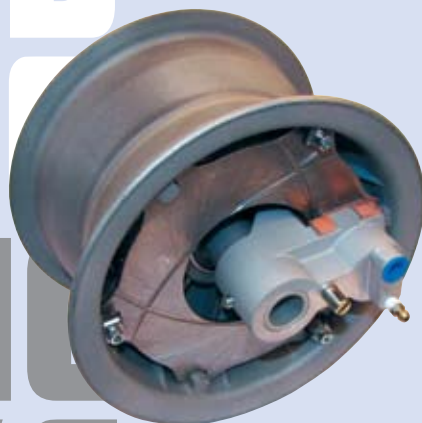
Price: 218 EUR

Brake: single disc, 1-piston

System: opened

Orientation: L - left, R - right

Dimensions according to drawing,  
trough-hole Ø 17mm



main  
LAND  
in  
WHEELS

## Disk 6"

**K-226A-000** **L=47**

**K-226A-000-shaft C** **L=40**

6" eco-power wheel with brake and shaft

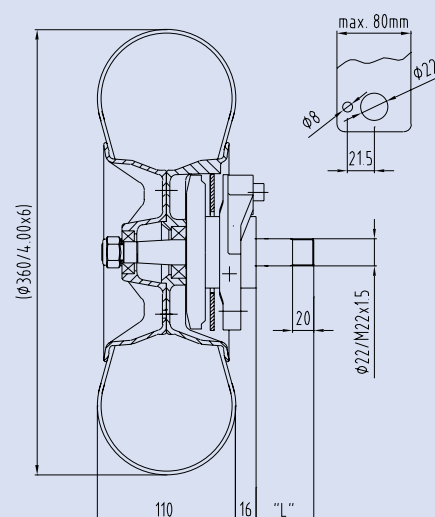
Weight: 2.450 g

Price: 320.90 EUR

Brake: single disc, 1-piston/articulated

System: closed

Orientation: L - left, R - right



## Disk 6"

**K-226V-000**

6" eco-power wheel with brake, without shaft, hole  $\phi 17$ mm

Weight: 1.980 g

Price: 296.40 EUR

Brake: single disc, 1-piston/articulated

System: closed

Orientation: L - left, R - right

Dimensions according to drawing, trough-hole  $\phi 17$ mm



## Disk 6"

### K-236A-000

6" eco wheel with standard brake and shaft

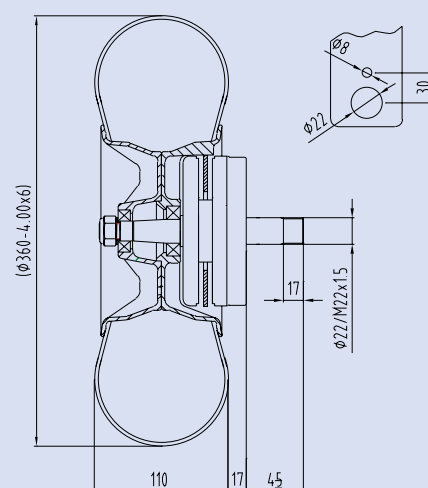
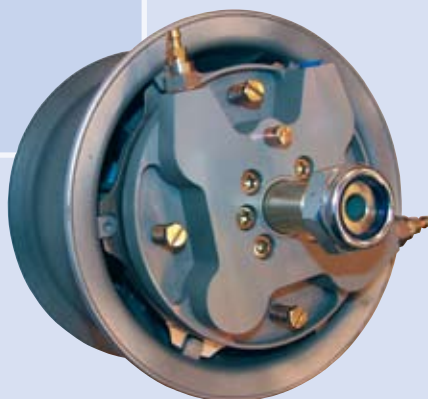
Weight: 2.815 g

Price: 395.60 EUR

Brake: single disc, 4-piston

System: closed

Orientation: L - left, R - right



## Disk 6"

### K-236V-000

6" eco wheel with standard brake, without shaft, hole Ø 17mm

Weight: 2.340 g

Price: 370.60 EUR

Brake: single disc, 4-piston

System: closed

Orientation: L - left, R - right

Dimensions according to drawing, trough-hole Ø 17mm

main  
LAND  
in  
WHEELS



## Disk 8"

### K-218A-000

8" wheel with brake and shaft

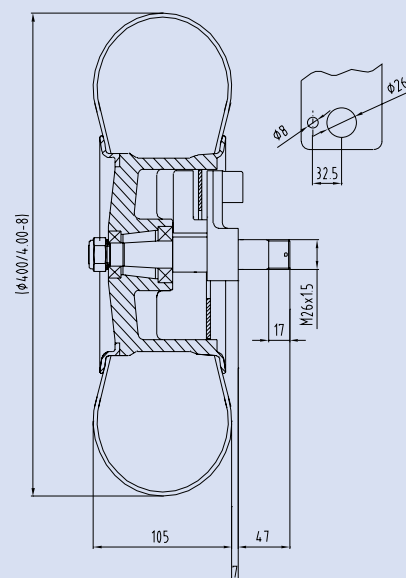
Weight: 2.730 g

Price: 499.60 EUR

Brake: single disc, 1-piston

System: closed

Orientation: L - left, R - right



## Disk 8"

### K-218V-000

8" wheel with brake, without shaft, hole Ø 17mm

Weight: 2.480 g

Price: 475.10 EUR

Brake: single disc, 1-piston

System: closed

Orientation: L - left, R - right

Dimensions according to drawing,  
trough-hole Ø 17mm

## Disk 10"

### K-210A-000

10" wheel with brake and shaft

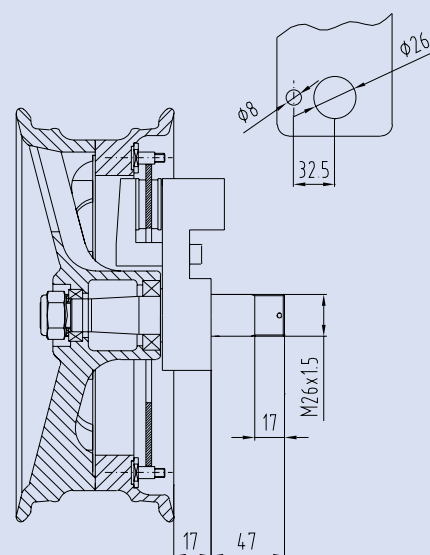
Weight: 3.800 g

Price: on request

Brake: single disc, 1-piston

System: closed

Orientation: L - left, R - right



## Disk 10"

### K-210V-000

10" wheel with brake, without shaft

Weight: 3.465 g

Price: on request

Brake: single disc, 1-piston

System: closed

Orientation: L - left, R - right

main  
LAND  
IN  
WHEELS



## Tyres, Tubes

All mentioned tyres are able to use for UL and VLA aircrafts.

Tost Aero 4" 4.00x4-8PR (Ø 310mm)

**K-04P-000**

Weight: 1.760 g

Price: 96 EUR



Mitas Aero 4" 4.00x4-6PR (Ø 310mm)

**K-04P-001**

Weight: 1.440 g

Price: 18.60 EUR



Mitas 4" Antishimmy (Ø 260mm)

**K-04P-002**

Weight: 1.160 g

Price: 115.70 EUR



Condor 5" 5.00x5-6PR (Ø 350mm)

**K-05P-000**

Weight: 2.500 g

Price: 99.20 EUR



Sava 6" 4.00x6-6PR (Ø 360mm)

**K-06P-000**

Weight: 1.280 g

Price: 20.20 EUR



TY  
RES  
TU  
BES



Cheng Shin 6" 6.00x6-6PR (Ø 350mm)  
**K-06P-001**  
Weight: 2.320 g  
Price: 27.40 EUR



Mitas Super 8" 4.00x8-6PR (Ø 400mm)  
**K-08P-000**  
Weight: 1.245 g  
Price: 20.30 EUR



Cheng Shin 200x50-4PR (Ø 200mm)  
**K-20P-000**  
Weight: 275 g  
Price: 11.80 EUR



Barum Aero 420x150 Light 2PR  
**K-065P-001**  
Weight: 3.250 g  
Price: 147.60 EUR



Barum Aero 420x150 4PR  
**K-065P-002**  
Weight: 3.900 g  
Price: 209.40 EUR



TY  
RES  
TU  
BES

Order No.	Product name	Weight	Price/Pcs.
K-04D-000	Tube 4.00 x 4, L-valve, massive	190 g	6.22 EUR
K-04D-001	Tube 3.50/4.00 x 4, L-valve, standard	150 g	6.22 EUR
K-05D-000	Tube 4.50/5.00 x 5, L-valve	180 g	9.00 EUR
K-06D-004	Tube 3.50/4.10 x 6, straight valve	240 g	7.60 EUR
K-06D-006	Tube 6.00 x 6, straight valve	345 g	9.60 EUR
K-06D-003	Tube 3.50/4.10 x 6, L-valve	240 g	7.40 EUR
K-08D-000	Tube 4.00 x 8, L-valve	275 g	6.70 EUR
K-20D-000	Tube 200 x 50, L-valve	80 g	8.80 EUR

# MAIN BRA KING CYLIN DERS



Main braking cylinders are divided into two groups: open and closed systems. The differences between these systems are on the page 19.

## MAIN BRAKING CYLINDERS

The difference is mainly that the open system has the integrated vial for a braking fluid from which the system can be filled in. The closed system is the lining wear compensated by setting directly on the brake caliper. All brake elements are designed for liquids DOT 3, DOT 4, DOT 5. The combination of our components with other products should be consulted when ordering.



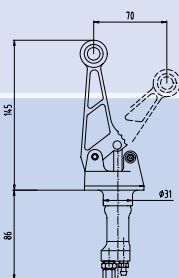


## Main braking cylinders for the closed brake system



### K-414A-000

The cylinder for a control lever  
Piston: Ø 14mm  
Weight: 230 g  
Price: 149 EUR

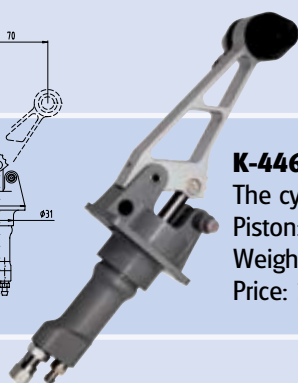
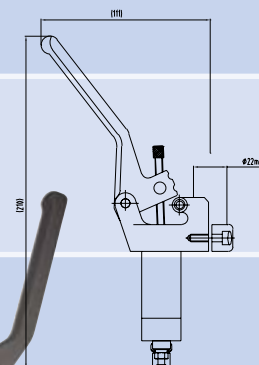


### K-419A-000

The cylinder for a control lever  
Piston: Ø 19mm  
Weight: 225 g  
Price: 149 EUR



Determined for the mounting on the control lever Ø22mm, per order up to Ø25mm

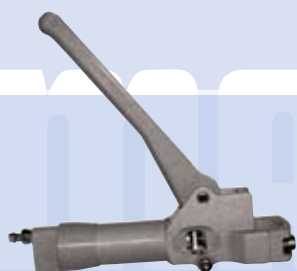
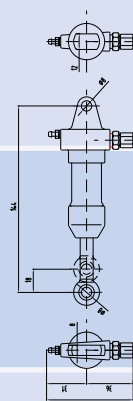
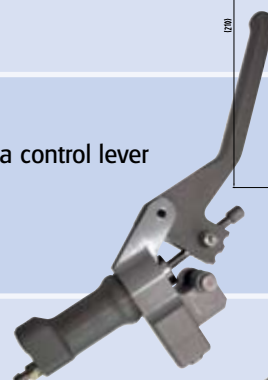


### K-446A-000

The cylinder for a central tunnel  
Piston: Ø 16mm  
Weight: 230 g  
Price: 162.50 EUR

### K-416A-000

The cylinder for a control lever  
Piston: Ø 16mm  
Weight: 230 g  
Price: 149 EUR

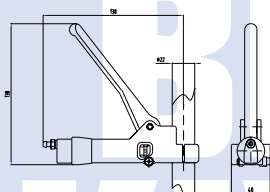
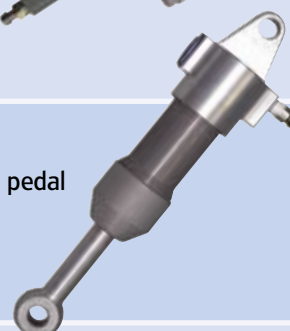


### K-418A-000

The cylinder for a control lever - straight  
Piston: Ø 16mm  
Weight: 195 g  
Price: 242.90 EUR

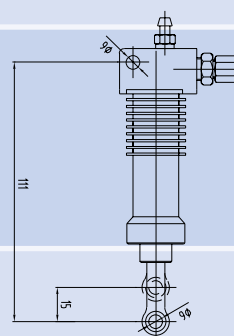
### K-456A-000

The cylinder for a pedal  
Piston: Ø 16mm  
Weight: 145 g  
Price: 87.40 EUR



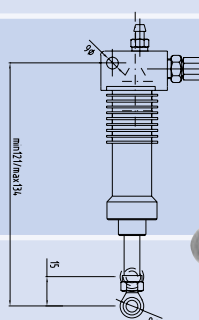
### K-404A-000

The cylinder for a pedal\*  
Piston: Ø 14mm  
Weight: 105 g  
Price: 69.20 EUR



### K-405A-000

The cylinder for a pedal - adjustable\*  
Piston: Ø 14mm  
Weight: 105 g  
Price: 73.70 EUR

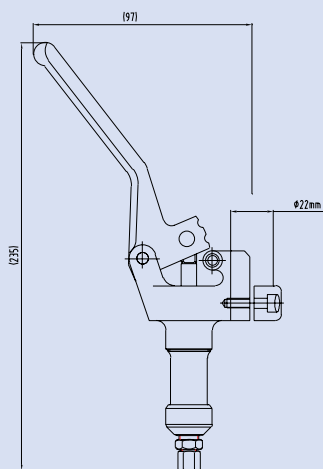


\* Delivered as left and right type

MAIN  
BRAKING  
CYLINDERS



## Main braking cylinders for the open brake system



### K-414B-000

The cylinder for a control lever

Piston: Ø 14mm

Weight: 230 g

Price: 154.30 EUR

*Determined for the mounting on the control lever Ø 22mm, per order up to Ø 25mm*



### K-422B-000

The cylinder for a control lever

Piston: Ø 12mm

Weight: 220 g

Price: 154.30 EUR

*Determined for the mounting on the control lever Ø 22mm, per order up to Ø 25mm*



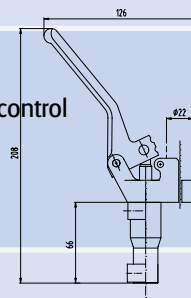
### K-420B-000

The cylinder for a control lever - twin control

Piston: Ø 14mm

Weight: 245 g

Price: 168 EUR

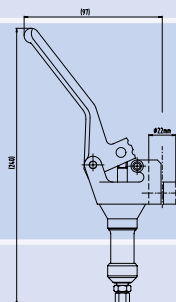


### K-424B-000

The cylinder for a control lever with bigger tank (3cm³)

Piston: Ø 14mm, Weight: 230 g

Price: 162 EUR



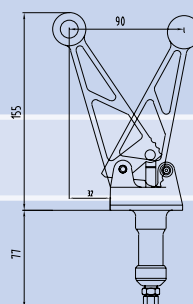
### K-412B-000

The cylinder for a central tunnel

Piston: Ø 12mm

Weight: 258 g

Price: 173.90 EUR



### K-426B-000

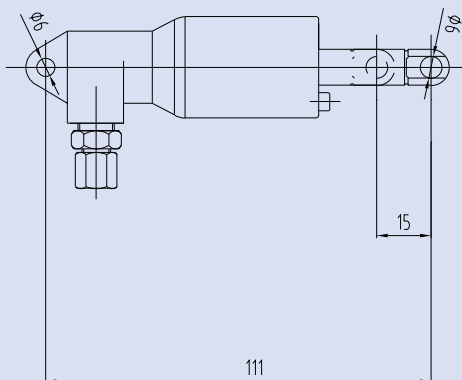
The cylinder for a central tunnel

Piston: Ø 16mm

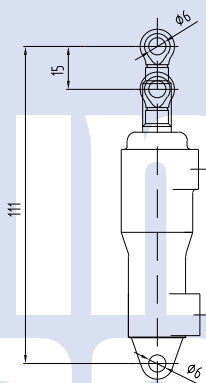
Weight: 290 g

Price: 178.80 EUR



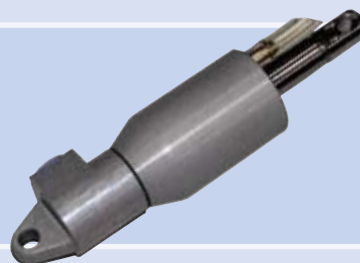


Drawing for 401 B, 402 B and 403 B



#### K-401B-000

The cylinder for a pedal  
Piston: Ø 10mm  
Weight: 120 g  
Price: 63.40 EUR



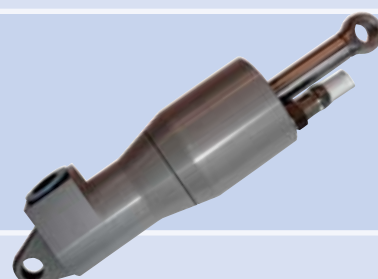
#### K-402B-000

The cylinder for a pedal  
Piston: Ø 12mm  
Weight: 130 g  
Price: 67.40 EUR



#### K-403B-000

The cylinder for a pedal  
Piston: Ø 14mm  
Weight: 130 g  
Price: 67.40 EUR



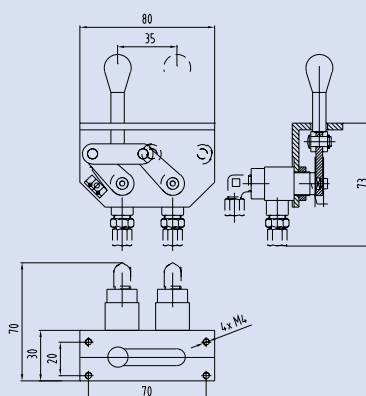
#### K-413B-000

The cylinder for pedal – twin control  
Piston: Ø 14mm  
Weight: 102 g  
Price: 89.40 EUR



#### K-458A-000

Hand brake for pedal cylinder  
Weight: 250 g  
Price: 104.80 EUR



MAIN  
BRAKING  
CYLINDERS

# TROTTLE FUEL SYSTEM CONTROL



## TROTTLE CONTROL

The throttle control mentioned in the offer is determined for a carburettor with a lever step 75mm (Bing). The lever control is locked by a gum block that is released by pressing a detent arm. The plastic ring provides a permanent detent by the screw control, the power is possible to set.

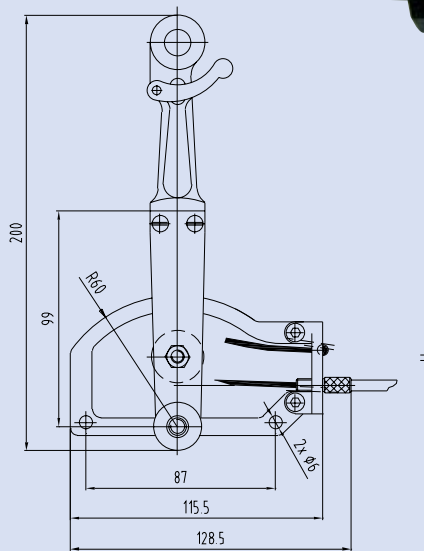


### **K-810A-000**

Control lever- for double carburettor

Weight: 270 g

Price: 216 EUR

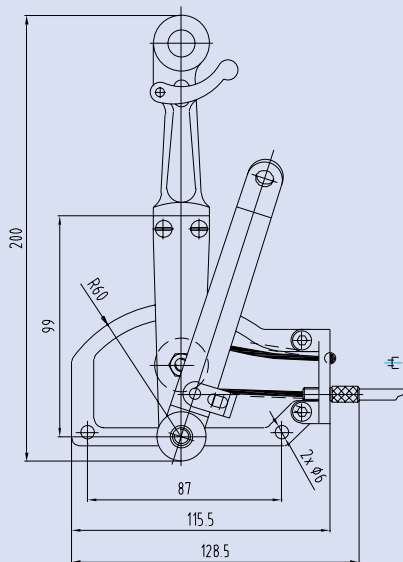


### **K-810B-000**

Control lever with choke- for double carburettor

Weight: 290 g

Price: 254 EUR



TROTTLE  
CONTROL

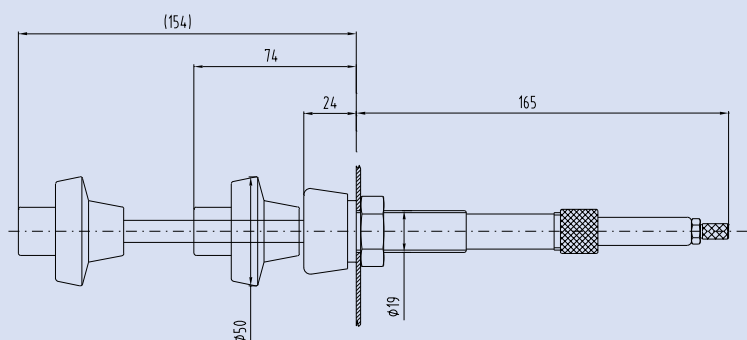


### K-820A-000

Screw control for single carburettor

Weight: 240 g

Price: 79.60 EUR

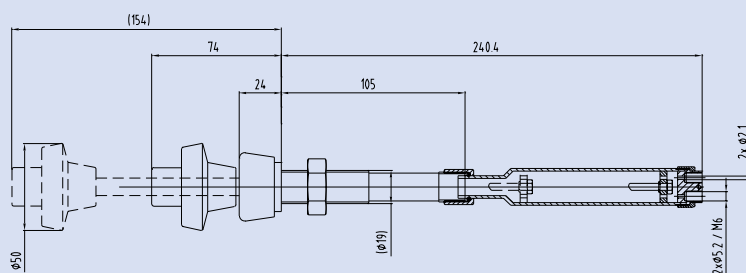


### K-820B-000

Screw control for double carburettor

Weight: 245 g

Price: 159 EUR



### K-521B-000

Fuel tank lid- lockable

Weight: 115 g

Price: 74 EUR





### K-503V-000

3-way fuel valve I-O-I  
Weight: 165 g



#### Choose a version:

Version A - 49.20 EUR



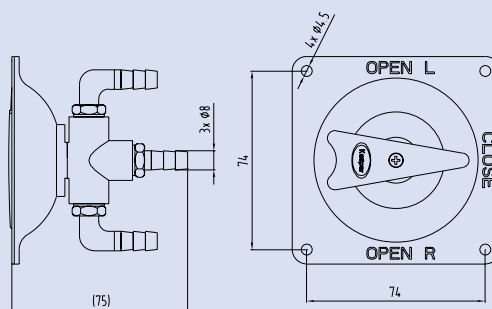
Version B - 49.20 EUR



Version C - 49.20 EUR

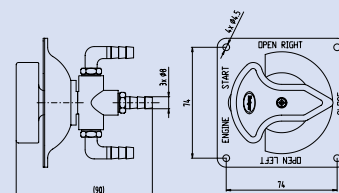
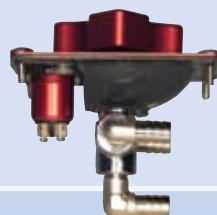
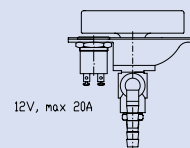
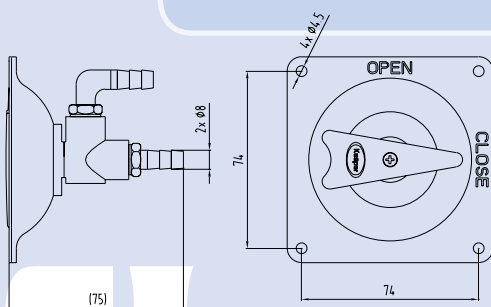


Version D - 47.20 EUR



### K-502V-000

2-way fuel valve I-O  
Weight: 145 g  
Price: 48.60 EUR



### K-513V-000

3-way fuel valve I-O-I with START switch  
Weight: 212 g  
Price: 92.70 EUR  
(price for var.D, without connections)



FUEL  
SYS  
TEM

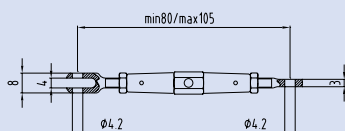


# THE STRE TCH ERS



## THE STRETCHERS

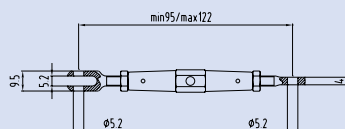
The stretchers are made by quality steel, machined by using the modern CNC technology and finished by the galvanization. It is possible to deliver various combinations of forks and eyes for all sizes of stretchers.



M4 – eye/fork  
**K-524A-000**  
 Weight: 20 g  
 Price: 26.50 EUR

M4 – eye/eye  
**K-524B-000**  
 Weight: 20 g  
 Price: 26.50 EUR

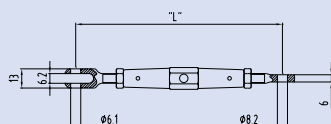
M4 – fork/fork  
**K-524C-000**  
 Weight: 20 g  
 Price: 26.50 EUR



M5 – eye/fork  
**K-525A-000**  
 Weight: 37 g  
 Price: 27 EUR

M5 – eye/eye  
**K-525B-000**  
 Weight: 37 g  
 Price: 27 EUR

M5 – fork/fork  
**K-525C-000**  
 Weight: 37 g  
 Price: 27 EUR



M6 – eye/fork  
**K-526A-000**  
 Weight: 44 g  
 L=min98÷max133  
 Price: 31.90 EUR

M6 – eye/eye  
**K-526B-000**  
 Weight: 44 g  
 L=min83÷max118  
 Price: 31.90 EUR

M6 – fork/fork  
**K-526C-000**  
 Weight: 44 g  
 L=min112÷max147  
 Price: 31.90 EUR

Maximum load - standard material			
Size	M4	M5	M6
Max. load	290 kg	500 kg	780 kg

# THE STRETCHERS

# EYES WITH THE OUTER THREAD



Dural  
eyes are made  
by the aluminium alloy  
EN AW 7075, machined by  
using the modern CNC technology  
and finished by the yellow-green  
anodisation. The eyes are delivered  
without the spherical bearing. Per  
order including the bearing.

## **EYES** WITH THE OUTER THREAD

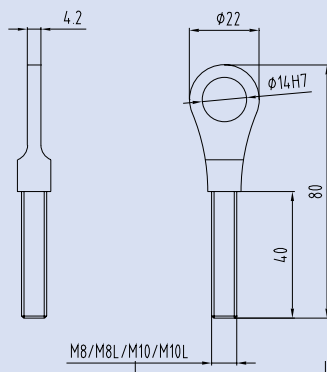
Steel  
eyes are made  
by the quality steel,  
machined by using the  
modern CNC technology with  
rolled thread and finished by  
the galvanization. The eyes are  
delivered without the spherical  
bearing. Per order it is possible  
to include the bearing.



Dural eyes

**M8**  
**K-501-031**  
For GE6  
Weight: 15 g  
Price: 10.10 EUR

**M8L**  
**K-501-033**  
For GE6  
Weight: 15 g  
Price: 10.10 EUR



Dural eyes

**M10**  
**K-501-032**  
For GE6  
Weight: 18 g  
Price: 10.10 EUR

**M10L**  
**K-501-034**  
For GE6  
Weight: 18 g  
Price: 10.10 EUR



Steel eyes

**M6**  
**K-501-101 P**  
For GE6  
Weight: 20 g  
Price: 10.250 EUR

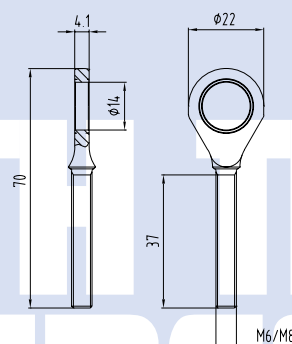
**M6L**  
**K-501-101 L**  
For GE6  
Weight: 20 g  
Price: 10.50 EUR

**M8**  
**K-501-102**  
For GE6  
Weight: 30 g  
Price: 10.50 EUR

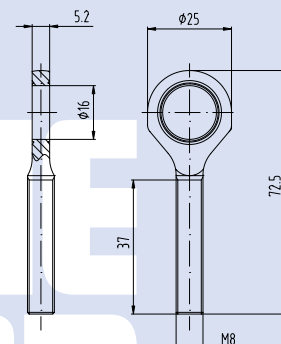
**M8L**  
**K-501-102 L**  
For GE6  
Weight: 30 g  
Price: 10.50 EUR

**M8**  
**K-501-108P**  
For GE8  
Weight: 20 g  
Price: 11.70 EUR

Prices are without bearings.



For GE6



For GE8

# EYES WITH THE OUTER THREAD

# ROD ENDS



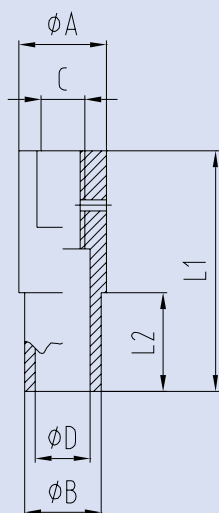
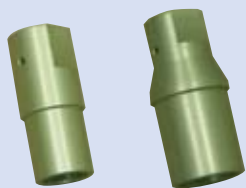
Rod  
ends are made by an  
aluminium alloy EN AW 7075,  
machined by using the modern CNC  
technology and finished by the yellow-  
green anodisation.

## ROD ENDS

Listed sizes are the warehouse stock. If it is  
necessary we are able to deliver other sizes.



## Rod ends with the inner thread



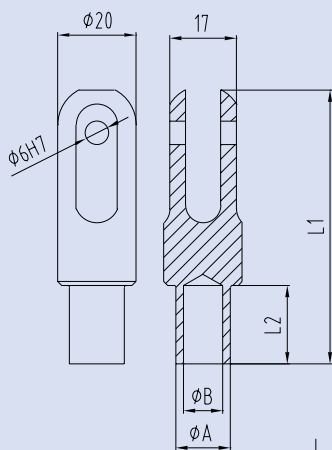
Order No.	Ø A	Ø B	thread	Ø D	L1	L2	weigh	price
K-501-001	16	12	M8	8	44	18	18 g	5.20 EUR
K-501-001L	16	12	M8L	8	44	18	18 g	5.20 EUR
K-501-002	16	14	M8	10	44	20	18 g	5.20 EUR
K-501-002L	16	14	M8L	10	44	20	18 g	5.20 EUR
K-501-063L	20	16	M10L	11	50	25	20 g	5.20 EUR
K-501-003	18	16	M8	12	46	22	22 g	5.20 EUR
K-501-003L	18	16	M8L	12	46	22	22 g	5.20 EUR
K-501-064	20	18	M10L	12	46	20	24 g	5.20 EUR
K-501-064L	20	18	M10L	12	46	20	24 g	5.20 EUR
K-501-004	20	18	M8	14	46	24	24 g	5.20 EUR
K-501-004L	20	18	M8L	14	46	24	24 g	5.20 EUR
K-501-060	25	22,6	M8	18	46	22	25 g	6.30 EUR
K-501-060L	25	22,6	M8L	18	46	22	25 g	6.30 EUR
K-501-061	25	22,8	M8	18	50	25	25 g	6.30 EUR
K-501-005	16	22	M8	18	50	25	25 g	6.30 EUR
K-501-062	25	23	M8	18	45	21	25 g	6.30 EUR

Sizes in mm.

# ROD ENDS

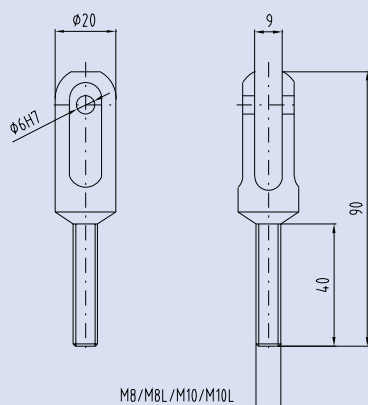
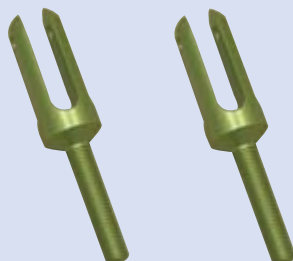


## The fork to insert into the tube



Order No.	Ø A	Ø B	L1	L2	weight	price
K-501-011	12	8	70	18	20 g	8.40 EUR
K-501-012	14	10	70	20	22 g	8.40 EUR
K-501-012 krátká	14	10	64	20	22 g	8.40 EUR
K-501-013	16	11	72	22	22 g	8.40 EUR
K-501-013 krátká	16	11	64	22	22 g	8.40 EUR
K-501-014	18	13	74	24	25 g	8.40 EUR
K-501-014 krátká	18	13	64	24	25 g	8.40 EUR
K-501-015	22	18	69	25	25 g	8.80 EUR
K-501-016	24	20	70	25	25 g	8.80 EUR
K-501-017	22,6	18	70	24	25 g	8.80 EUR
K-501-018	23	18	70	24	25 g	8.80 EUR
K-501-019	19	15	74	24	25 g	8.80 EUR
K-501-020	26	21	69	25	30 g	8.80 EUR

width of fork is 9 mm



Order No.	A	L1	L2	weight	price
K-501-021	M8	90	40	28 g	9.20 EUR
K-501-022	M10	90	40	28 g	9.20 EUR
K-501-023	M8L	90	40	30 g	9.20 EUR
K-501-024	M10L	90	40	30 g	9.20 EUR

# ROD ENDS





Braided hose with M10x1

**K-DKL-101**

Weight: 78 g/m

Price: due to its lenght

Hoses price/pc:

L=240	L=350	L=500	L=700	L=750	L=760	L=780	L=850	L=870	L=900	L=1000	L=1050	L=1100
9,-	11.20	11.50	11.80	11.80	12.20	12.30	11.90	13.50	13.80	14.20	14.20	14.70

L=1200	L=1350	L=1400	L=1500	L=1600	L=1700	L=1770	L=1800	L=2000	L=2100	L=2200	L=2700
15,-	16.40	16.40	17.10	17.60	18.80	19.60	19.60	21.10	21.40	22,-	26.10



I - connecting 10x1

**K-210-480-0**

Weight: 14 g

Price: 1.20 EUR



L - connecting 10x1

**K-210-280-0**

Weight: 13 g

Price: 1.50 EUR

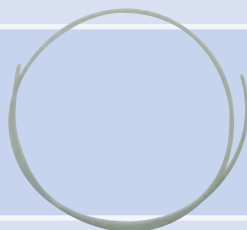


T - connecting 10x1

**K-210-200-0**

Weight: 24 g

Price: 3.10 EUR



Tube 4x2 PA6

**K-PA6-004**

Weight: 9 g/m

Price: 0.42 EUR/m



I - connecting 4x2

**K-39480-4**

Weight: 14 g

Price: 1.25 EUR



L - connecting 4x2

**K-39280-4**

Weight: 13 g

Price: 1.60 EUR



T - connecting 4x2

**K-39200-4**

Weight: 24 g

Price: 3 EUR



Insertion for 4x2

**K-10770-4**

Weight: 5 g

Price: 0.20 EUR

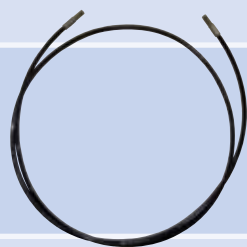


Incise ring 4x2

**K-10740-4**

Weight: 5 g

Price: 0.25 EUR



Kevlar Braided hose

**K-DKL-201**, lenght 50 cm, Price: 7.50 EUR

**K-DKL-202**, lenght 100 cm, Price: 10.20EUR

free lenght to order



L - connection 5x2

**K-29280-6**

Weight: 13 g

Price: 1.65 EUR



T - connection 5x2

**K-29200-6**

Weight: 24 g

Price: 3.20 EUR



I - connection 5x2

**K-29480-6**

Weight: 14 g

Price: 1.28 EUR



Incise ring 5x2

**K-10740-6**

Weight: 7 g

Price: 0.36 EUR

# ACCESSORIES



Connection, straight ø9mm  
**K-130-40-9-1/8**  
 Taper thread G1/8  
 Weight: 12g  
 Price: 1.30 EUR



Connection 90°, ø9mm  
**K-130-55-9-1/8**  
 Taper thread G1/8  
 Weight: 13g  
 Price: 1.46 EUR



Connection 90°, ø7mm  
**K-130-55-7-1/8**  
 Taper thread G1/8  
 Weight: 9g  
 Price: 1.46 EUR



Connector straight for 4x2  
**K-39460-4**  
 Price: 2.30 EUR



Connector 90° for 4x2  
**K-39260-4**  
 Price: 2.75 EUR



Disguised nuts for connectors 4x2  
**K-10680-4**  
 Price: 0.35 EUR



Bleed screw M7  
**K-505A-100**  
 Price: 5.42 EUR



Bleed screw M6  
**K-505A-M6**  
 Price: 3.18 EUR



Fitting for bleed screw M7  
**K-505A-002**  
 Price: 3.98 EUR



Cup for brake fluid  
**K-PNK-001**  
 Weight: 70g, volume 50ml, outlet Ø 8 mm  
 Price: 10.20 EUR



Plastic T-connector 6mm  
**TS 06**  
 Weight: 14 g  
 Price: 0.96 EUR



**Adjust key - straight**  
 for wheel: K-226, K-218  
 Price: 4.10 EUR



**Adjust key - T**  
 for wheel: K-226, K-218  
 Price: 4.90 EUR



Holder for facing gauge  
**K-PIT-050**  
Weight: 50 g  
Price: 20.41 EUR



Facing gauge  
**K-PIT-005**  
Weight: 40 g  
Price: 49 EUR



Set of silenblock for Rotax engine - 4pcs  
**K-SIL-100**  
Weight: 465 g  
Price: 120.50 EUR



Breaker 8A  
**K-908A**  
Weight: 28 g  
Price: 19.60 EUR



Breaker 16A  
**K-916A**  
Weight: 28 g  
Price: 19.60 EUR



Breaker 25A  
**K-925A**  
Weight: 28 g  
Price: 19.60 EUR



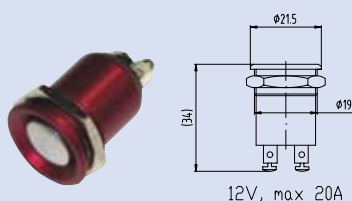
Steel switch ON/OFF  
**K-950A**  
Weight: 23 g  
Price: 4.30 EUR



Steel switch ON/OFF  
**K-950B**  
Weight: 24 g  
Price: 4.30 EUR



Split cover for steel switch  
**K-950F**  
Weight: 14 g  
Price: 5.10 EUR



START switch  
**K-950S**  
Weight: 18 g  
Price: 14.70 EUR



Spherical bearing  $\varnothing 6/\varnothing 14$   
**K-GE-6**  
Weight: 4 g  
Price: 3.20 EUR



Spherical bearing  $\varnothing 8/\varnothing 16$   
**K-GE-8**  
Weight: 8 g  
Price: 7.46 EUR



## For wheel 4" K-204 – all modifications

Cat. No.	Name	Price
K-204A-100	Wheel rim 4" for brake with shaft	134 EUR
K-204V-100	Wheel rim 4" for brake to fork	133.40 EUR
K-304A-000L	Brake 4" complete, left, shaft L=50mm	331.60 EUR
K-304A-000R	Brake 4" complete, right, shaft L=50mm	331.60 EUR
K-304A-000L-hridel C	Brake 4" complete, left, shaft L=39mm	331.60 EUR
K-304A-000R-hridel C	Brake 4" complete, right, shaft L=39mm	331.60 EUR
K-304V-000R	Brake 4" complete, to fork - right	306.94 EUR
K-304V-000L	Brake 4" complete, to fork - left	306.94 EUR
K-304S-100	Set of brake pads for one brake (3pcs) - to 06/2004, ser.nr. B4 112	100 EUR
K-304B-567	Set of brake pads for one brake 4" (3pcs)	100 EUR
K-304A-009	Set of brake disc for one wheel 4" (2pcs)	59.60 EUR
O-ring two-edged D19	D19 - 4pcs - for one brake	1.30 EUR
Bearing 6003	ø35/ø17/10	2.75 EUR
Bearing 6004	ø42/ø20/12	3.10 EUR
Bearing 6201	ø32/ø12/10	1.70 EUR
Bearing 6002	ø32/ø15/9	1.83 EUR



K-204A-100



K-204V-100



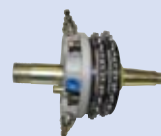
K-304A-009



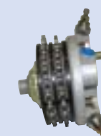
K-304B-567



K-304S-100



K-304A-000L



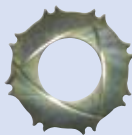
K-304V-000L

## For wheel 5" K-205 – all modifications

K-305B-023	Set of brake pads for one brake	108.20 EUR
K-305A-005	Brake disc 5"	37.60 EUR
K-305A-005a	Brake disc 5" / 6"	29.30 EUR



K-305B-023



K-305A-005

## For wheel 6" eco K-206 – all modifications

K-206A-100	Wheel rim 6"	131 EUR
K-306A-000L	Brake 6" standard, complete, left	322.40 EUR
K-306A-000R	Brake 6" standard, complete, right	322.40 EUR
K-306A-134	Set of brake pads for one brake (2pcs)	108.20 EUR
K-306A-001	Brake disc 6"	45.70 EUR
K-206A-001	Shaft, lenght from brake 48mm	37.60 EUR
K-206F-001	Shaft, lenght from brake 64mm	37.60 EUR
K-206V-001	Bush brake - wheel - to the fork	9.80 EUR
O-ring two-edged D22	D22 - 4pcs - for one brake	1.45 EUR
Bearing 6003	ø35/ø17/10	2.75 EUR
Bearing 6005	ø47/ø25/12	2.80 EUR
K-206A-006	Lock ring	0.35 EUR
K-206A-007	Cup of bearing with hole	4.10 EUR



K-206A-100



K-306A-001



K-306A-134



K-306A-000L



K-206A-006



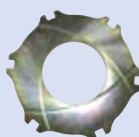
K-206A-007

## For wheel 6" eco K-216 – all modifications

Cat. No.	Name	Price
K-216A-100	Wheel rim 6" eco	85.30 EUR
K-326A-000L	Brake 6" eco, complete, left	103.30 EUR
K-326A-000R	Brake 6" eco, complete, right	103.30 EUR
K-326A-034	Set of brake pads for one wheel (2pcs)	34.70 EUR
K-326A-002	Brake disc 6" eco	29.40 EUR
K-216A-001	Shaft, lenght from brake 48mm	28 EUR
K-216C-001	Shaft, lenght from brake 42mm	33.50 EUR
K-216D-001	Shaft, lenght from brake 40mm	33.50 EUR
K-216G-001	Shaft, lenght from brake 68mm	40.40 EUR
K-216A-003	Brake disc lock	0.41 EUR
K-216A-004	Self-locking nut M22 x 1,5	2.50 EUR
DIN 985	Self-locking nut M14 x 1,5	0.75 EUR
K-216-A-002	Safety washer	4.10 EUR
O-ring	26 x 2,5 EPDM	0.60 EUR
Bearing 6003	ø35/ø17/10	2.75 EUR
Bearing 6004	ø42/ø20/12	3.10 EUR



K-216A-100



K-326A-002



K-326A-034



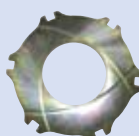
K326A-000L

## For wheel 6" eco power K-226 – all modifications

K-216A-100	Wheel rim 6" eco	85.30 EUR
K-336A-000L	Brake 6" eco power, complete, left	187.20 EUR
K-336A-000R	Brake 6" eco power, complete, right	187.20 EUR
K-365A-113	Set of brake pads for one wheel (4pcs)	51 EUR
K-326A-002	Brake disc 6" eco	29.40 EUR
K-216A-001	Shaft, lenght from brake 47mm	28 EUR
K-216C-001	Shaft, lenght from brake 41mm	33.50 EUR
K-216D-001	Shaft, lenght from brake 39mm	33.50 EUR
K-216G-001	Shaft, lenght from brake 67mm	40.40 EUR
K-216A-004	Self-locking nut M22 x 1,5	2.50 EUR
DIN 985	Self-locking nut M14 x 1,5	0.75 EUR
O-ring	26 x 2 EPDM	0.60 EUR
K-216A-002	Safety washer	4.10 EUR
Bearing 6003	ø35/ø17/10	2.75 EUR
Bearing 6004	ø42/ø20/12	3.10 EUR
K-336A-510	Adjusting screw M24x1,5 complete	7.95 EUR



K-216A-100



K-326A-002



K-365A-113



K-336-A-000L



K-336A-510

## For wheel 6"eco/4-piston brake K-236 – all modifications

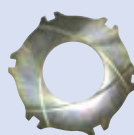
Cat. No.	Name	Price
K-216A-100	Wheel rim 6" eco	85.30 EUR
K-306C-000L	Brake 6" standard, complete, left	322.40 EUR
K-306C-000R	Brake 6" standard, complete, right	322.40 EUR
K-306A-134	Set of brake pads for one brake (2pcs)	108.20 EUR
K-326A-002-4mm	Brake disc 6" eco strong 4mm	39 EUR
K-216A-001	Shaft, lenght from brake 45mm	28 EUR
K-216C-001	Shaft, lenght from brake 39mm	33.50 EUR
K-216D-001	Shaft, lenght from brake 37mm	33.50 EUR
K-216G-001	Shaft, lenght from brake 65mm	40.40 EUR
K-216A-004	Self-locking nut M22 x 1,5	2.50 EUR
DIN 985	Self-locking nut M14 x 1,5	0.75 EUR
O-ring two-edged D22	D22 - 4pcs - for one brake	1.45 EUR
Bearing 6003	ø35/ø17/10	2.75 EUR
Bearing 6004	ø42/ø20/12	3.10 EUR



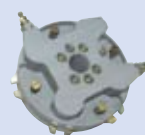
K-216A-100



K-306A-134



K-326A-002



K-306C-000L



K-218A-100



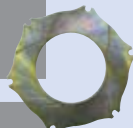
K-318A-000L



K-218A-005



K-323C-001



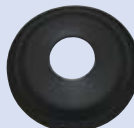
K-218A-004



K-218A-105



DIN 912



K-218A-006



k-218A-002



k-218A-003

## For wheel 8" K-218 – all modifications

K-218A-100	Wheel rim 8"	231 EUR
K-318A-000L	Brake8" complete, left	157.20 EUR
K-318A-000R	Brake8" complete, right	157.20 EUR
K-323C-001	Set of brake pads for one wheel (2pcs)	29.30 EUR
K-218A-004	Brake disc 8"	39.20 EUR
K-218A-001	Shaft, lenght from brake 47mm	47 EUR
K-218A-002	Follower pin - sraight	4.20 EUR
K-218A-003	Follower pin - stepped	4.20 EUR
Gasket	D25,5 (to the part nr. B8 536)	0.82 EUR
O-ring	20x3 EPDM (from the part nr.B8 537, 09-10/2008)	0.62 EUR
K-218A-005	follower pin - replacement for stepped, lock washer	3.63 EUR
K-218A-105	Screw with 90° head (to 12/2008)	1.06 EUR
DIN 912	Screw standard (from 1/2009)	1.06 EUR
K-206A-006	Lock ring	0.35 EUR
K-218A-006	Cup of bearing with hole	4.10 EUR



K-SET-01



K-SET-02



K-SET-03



K-807A-100

## Spare parts - propeller

Cat. No.	Name	Price
K-SET-01	Set of screw for propeler fixing	58 EUR
K-SET-02	Set of screw conus-hub	1.20 EUR
K-SET-03	Set of screw for conus	1.20 EUR
K-807A-100	Rod of blade - complete	51.70 EUR
Servis KA	Propeller check 500h, 2-blade/3-blade (TBO)	250 EUR

\* disassembly/blade polishing/balancing/assembly – price incl. only small connection material

## Spare parts - main brake cylinders

Cat. No.	Name	Price
K-TES-401B	Gasket set for K-401B-000	1.20 EUR
K-TES-402B	Gasket set for K-402B-000	1.20 EUR
K-TES-403B	Gasket set for K-403B-000	1.20 EUR
K-TES-404A	Gasket set for K-404A-000	0.41 EUR
K-TES-405A	Gasket set for K-405A-000	0.41 EUR
K-TES-412B	Gasket set for K-412B-000	1.63 EUR
K-TES-414B	Gasket set for K-414B-000	1.63 EUR
K-TES-416A	Gasket set for K-416A-000	0.41 EUR
K-TES-419A	Gasket set for K-419A-000	0.62 EUR
K-TES-422B	Gasket set for K-422B-000	1.63 EUR
K-401B-006	Tube connector for cylinder:	
	K-401B/402B/403B/412B/414B/422B	1.71 EUR
K-401B-005	Tube connector - filling	1.80 EUR

## Tools

Cat. No.	Name	Price
TN300	Pressure vessel for brakes system filling	176.30 EUR



TN300



# GENERAL TRADING CONDITIONS

## Generally

Supplies of goods and services abide by the under mentioned general trading conditions. The buyer's general trading conditions are not accepted. Buyer's changes of discretions and duties in agreement with the contract of purchase are allowed solely with the seller's written agreement.

## Positive law

The trading conditions and business relations between a buyer and a seller abide by the law in the Czech Republic. Another national law, as well international law is eliminated from the relation.

## Prices

The prices stated in our catalogue are not binding. If there is the change of the price in the catalogue, it will be told to the buyer in the written form and there will be a seven day time limit to back out of the contract. After the lapse of the time limit the price is considered to be agreed. All prices are listed without VAT, package, transportation and insurance of the good. The quotations can be exceeded maximally by twenty percentages. We stipulate mistakes and errors of the printing. Please, check out actual prices at [www.kasparaero.cz](http://www.kasparaero.cz).

## Terms of delivery

The partial delivery and the partial fulfilment are allowed. Each partial delivery and each partial fulfilment are in this case an individual delivery and fulfilment. Entire good is immediately delivered after the manufacturing. Our appointed terms of the delivery are not- committal. The good is sent on the buyer's cost and danger. We are not responsible for damaged goods and a late delivery as well for consequences. The good can be insured on the buyer's written request and his costs. Damage on the good caused by the transportation must be immediately conveyed to the purveying transporter. In case that the buyer will not accept the good; he is obligated to cover incurred costs of transportation and ten percentages of the purchase price.

## Payment conditions

The fulfilment is done by the invoice with the fourteen day maturity unless it is said alternatively bank charges are paid by the buyer. Cheques are not accepted. If it is not paid in the mentioned term we postulate the right to charge the default penalty. The buyer is not entitled to hold back the payment or exercise unjustified claims by reason of the issuable fulfilment.

## Property right

The good is the property of the seller up to the full payment of the purchase price. In case the buyer handle the good to another person in the connection with the business activity, yet the good is still the property of the seller. The seller can repudiate the property right on the request of the buyer provided that he will sustain the guarantee.

## Granted guarantee

We give the guaranteed period set by the law on our delivered good starting with the obtaining of the good. At first, buyer has the claim to remove the fault on the good and only then the claim to retreat from the contract. The claim to change the good does not exist.

## The rules for the mending:

A) After finding the fault the buyer has to immediately let it be known in the written form to the seller. The guaranteed period for parts used during the reconstruction is valid according to the original purchase contract.

B) The claim for the guarantee expired in case the buyer did not announce the fault on the good, regardless, he still used it, he did not use it in agreed manner, he overtaxed or adjusted the good. Otherwise he mounted another parts into the delivered good that had not been agreed by the seller, he did not respect the instructions of the operation and the maintenance and the documentation delivered with the good. The natural wear and tear is excluded from the guarantee. The seller does not grant the compatibleness in the connection with other sellers' good.

C) The return of the good in the guaranteed period can be done only in case that the buyer sent the number of the invoice and the description of the fault on the good in advance. Consequently the buyer must give an opportunity to take back the good. The copy of the invoice must be enclosed to the delivery. The good sent without the previous agreement will not be accepted. In case the good will be sent to the seller during the guaranteed period unwarrantably, the costs including the transportation will be charged to the buyer.

## The return of the good

The good sold out of the Czech Republic is able to return only after the agreement with the seller. The rules for the final customers in the Czech Republic are: each product that you buy is possible to return without giving reasons within fourteen days undamaged. The return of the good must be announced in advance in the written form. If the buyer will not deliver the good back to the seller himself, the seller will let take out the good by the transportation company. Please enclose the copy of the invoice to the delivery and mark what good according the fourteen day term you return. The purchase price is usually return in the form of the credit note or in the other agreed manner in advancen but fundamentally in the area of the Czech Republic. The amount for the transportation will be subduct from the value of the good. After obtaining the good by the seller the purchase contract or the invoice is not valid. The condition of returning the purchase price is that the good is sent undamaged and the package is not ruined in accordance with the texture of the good. The right to return the good is only for the amount usual for the final consumption. If the good is manufactured for the individual order there is no right to return this good for any customer. If the buyer is the person who dedicates to the selling and manufacturing of the delivered good there is no right to return the good in the appointed term. In that case the seller stipulates the right to determine the conditions of returning the good.

## Responsibility

Responsibility of the seller's legitimate representatives and workers to the buyer is excluded except the case of the rough carelessness. The parts delivered by our company are set for the sport flying device that is carried out on the danger of the buyer (except the parts with the set method of the exams). We reject all responsibility for health and the property caused by using of these parts.

## The place of the fulfilment and the place of the trial

The place of the fulfilment is the seat of the seller. In case of the disagreement, the court in the place of the seller is relevant.

## The protection of the dates

The buyer agrees with the using the shared information about his personality in the seller's database. The seller promises not to give it to another person and looks after it as private.

## The Invalidity

In case of the invalidity of any regulation of general trading conditions the rest remain valid.







*... safely to the destination*

**KAŠPAR a synové-strojírna Kalmar, s.r.o.,**  
Nádražní 39/76, Praha 5 - 150 00  
[info@kasparaero.cz](mailto:info@kasparaero.cz), [www.kasparaero.cz](http://www.kasparaero.cz)

